



POTAMOS Candle Holders

Cylindrical candle holders in oxidized brass with a perimetrical cutout linear pattern,
with a base on oxidized brass.

The "Potamos" candleholders can enclose glass candles up to $\Phi=75$ mm.

SPECIFICATIONS

MATERIALS

As Pictured:
Brass in light and dark oxidation

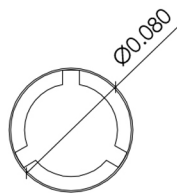
DIMENSIONS

Φ : 8cm / 3.15"
H: 11cm / 4.33"

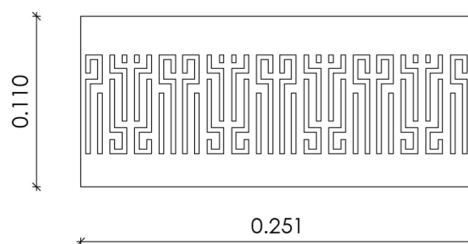
CUSTOMIZATION

Available in custom metal finish,
upon request.

TECHNICAL DRAWING



PLAN



DESIGN SPREAD